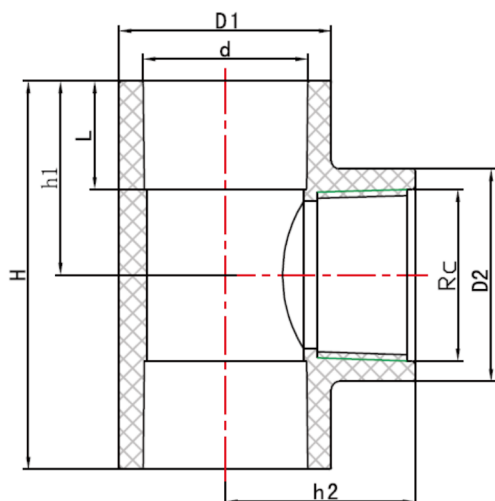


TECHNICAL DATA | uPVC CAT 21 FAUCET TEE

Standards: AS/NZS 1477 | Watermark

Size Range: 15mm x 1/2" - 50mm x 2"

Materials: uPVC



Size mm x inch	D1 mm	D2 mm	d mm	L mm	h1 mm	h2 mm	H mm	Rc inch	Pressure Rating	Code
15mm x 1/2"	27.3	27.3	21.7	20	31	31	62	1/2"	PN18	TTF1512
20mm x 1/2"	33.6	27.3	27.2	22	34	34	67	1/2"	PN18	TTF2012
20mm x 3/4"	33.6	33.6	27.2	22	36.5	35.5	73	3/4"	PN18	TTF2034
25mm x 1/2"	40.6	27.3	34	24	36	37	71	1/2"	PN18	TTF2512
25mm x 3/4"	40.6	33.6	34	24	38	39	77	3/4"	PN18	TTF2534
25mm x 1"	40.6	40.6	34	24	42	41	83	1"	PN18	TTF251
32mm x 1/2"	50.7	27.3	42.7	29	41	41	82	1/2"	PN18	TTF3212
32mm x 3/4"	50.7	33.7	42.7	29.2	44.5	42.89	89.02	3/4"	PN18	TTF3234
32mm x 1"	50.7	40.6	42.7	29	47	46	94	1"	PN18	TTF321
32mm x 1 1/4"	50.7	49.9	42.2	28.5	50.7	51.85	101.4	1 1/4"	PN18	TTF32114

Note:

Installation should always be performed by a licensed operator. It is the responsibility of the installer to check that both the pipe(s) and fitting(s) that are installed are compatible, only compatible materials should be joined together. It is the responsibility of the licensed installer to check the PN ratings marked on the fitting(s) and ensure that the pipe is compatible. Correct installation procedures should always be followed.

The drawings, materials and specifications outlined are subject to change without notice due to the continuous improvements and development of our product range.

FUSION QLD PTY LTD

ABN: 42 987 067 369
13 Vision Court, Noosaville, QLD, 4566
42-44 South Link, Dandenong, VIC, 3175

CONTACT

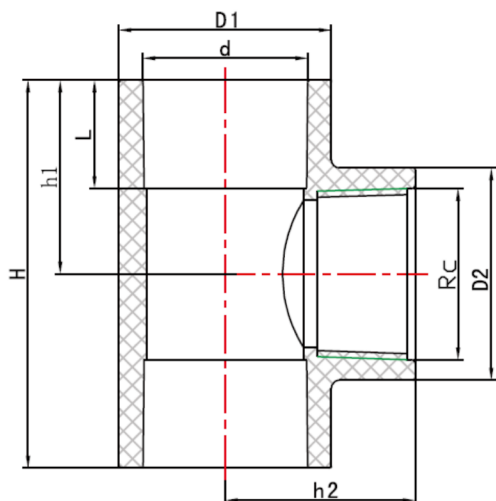
T: +61 7 5474 3000 (Qld)
T: +61 3 9037 4755 (Vic)
E: sales@fusionqld.com.au
W: fusionqld.com.au

TECHNICAL DATA | uPVC CAT 21 FAUCET TEE

Standards: AS/NZS 1477 | Watermark

Size Range: 15mm x 1/2" - 50mm x 2"

Materials: uPVC



Size mm x inch	D1 mm	D2 mm	d mm	L mm	h1 mm	h2 mm	H mm	Rc inch	Pressure Rating	Code
40mm x 1/2"	58.3	27.3	48.7	32	44	45	88	1/2"	PN18	TTF4012
40mm x 3/4"	58.3	33.6	48.7	32	47	47	94	3/4"	PN18	TTF4034
40mm x 1"	58.3	40.6	48.7	32	50	49	100	1"	PN18	TTF401
40mm x 1½"	59.3	59.3	48.7	32	56.9	51.2	113.8	1 1/2"	PN18	TTF40112
50mm x 1/2"	70.9	32.5	60.7	35.9	49.7	49.2	99.9	1/2"	PN18	TTF5012
50mm x 3/4"	70.8	33.6	60.8	38	53	53	106	3/4"	PN18	TTF5034
50mm x 1"	70.8	40.6	60.80	38	56	55	112	1"	PN18	TTF501
50mm x 1½"	70.8	56.5	60.6	37.9	65.3	64.6	130.1	1 1/2"	PN18	TTF50112
50mm x 2"	70.8	70.6	60.6	36	66.4	66.6	133.2	2"	PN18	TTF502

Note:

Installation should always be performed by a licensed operator. It is the responsibility of the installer to check that both the pipe(s) and fitting(s) that are installed are compatible, only compatible materials should be joined together. It is the responsibility of the licensed installer to check the PN ratings marked on the fitting(s) and ensure that the pipe is compatible. Correct installation procedures should always be followed.

The drawings, materials and specifications outlined are subject to change without notice due to the continuous improvements and development of our product range.

FUSION QLD PTY LTD

ABN: 42 987 067 369
13 Vision Court, Noosaville, QLD, 4566
42-44 South Link, Dandenong, VIC, 3175

CONTACT

T: +61 7 5474 3000 (Qld)
T: +61 3 9037 4755 (Vic)
E: sales@fusionqld.com.au
W: fusionqld.com.au